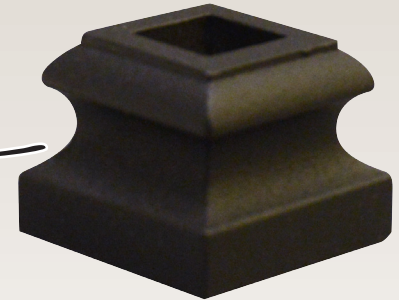


NTC Iron Forgings



Angled Shoe

Shoe Collection



Straight Shoe

Straight Shoe Square Opening 1/2" #2613-151 BLK
Straight Shoe Round Opening 9/16" #2613-156 BLK
Angled Shoe Square Opening 1/2" #2613-153 BLK

Angled Shoe Round Opening 9/16" #2613-159 BLK
BLK = Black

Behold the Beauty

If you insist on safety, unsurpassed quality and finish at an affordable price, then NTC balusters will fit your lifestyle perfectly!

Quality craftsmanship for today's elegant homes.

Installation Instructions

Remove the wood balusters by cutting them in half between the rail and the floors with a saw and pulling the two ends free. If nails are present, remove them and fill holes with matching wood filler. Sand and touch up around the baluster holes.

Install new balusters by using a 5/8" bit to drill into the center of the existing hole to a maximum depth of 3/4", down from the floor surface and a depth of 1-1/2" up into the rail.

Measure the distance at each baluster, from the bottom of the rail to the floor surface. Add 1-3/8" to the measurement to determine the baluster's length.



Balusters should slide up into the rail and down into the floor. It is important to ensure that the baluster has a proper fit before you apply any adhesive. Adjust the hole size or the length of the baluster if necessary. Use epoxy or polyurethane adhesive to secure.

The baluster shoes are used to cover old holes and adhesive. Place them on the top and bottom of the baluster to finish the look.

Instructions shown are not suitable for all stairs. Product line is for interior use only, and complies with the national building code standards.



37 Lancaster St. W., Kitchener, ON N2H 4T1

T: 888-503-3623 F: 519-745-1309

sales@newtrendfencing.com

www.newtrendfencing.com

NTC Iron Forgings

Railing Balusters

Twist & Basket Collection



Iron Baluster, Dual Twist, Single Basket – 1/2" x 44"
2613-122 BLK



Iron Baluster, Single Twist – 1/2" x 44"
2613-120 BLK



Iron Baluster, Single Twist, Dual Basket – 1/2" x 44"
2613-123 BLK



Iron Baluster, Dual Twist – 1/2" x 44"
2613-121 BLK

The Knuckle Collection



Iron Baluster, Round Single Knuckle – 9/16" x 44"
2613-133 BLK



Iron Baluster, Solid Round – 9/16" x 44"
2613-130 BLK



Iron Baluster, Round Dual Knuckle – 9/16" x 44"
2613-137 BLK



Iron Baluster, Single Knuckle – 1/2" x 44"
2613-131 BLK



Iron Baluster, Solid Square – 1/2" x 44"
2613-105 BLK



Iron Baluster, Dual Knuckle – 1/2" x 44"
2613-132 BLK



37 Lancaster St. W., Kitchener, ON N2H 4T1
T: 888-503-3623 F: 519-745-1309
sales@newtrendfencing.com
www.newtrendfencing.com